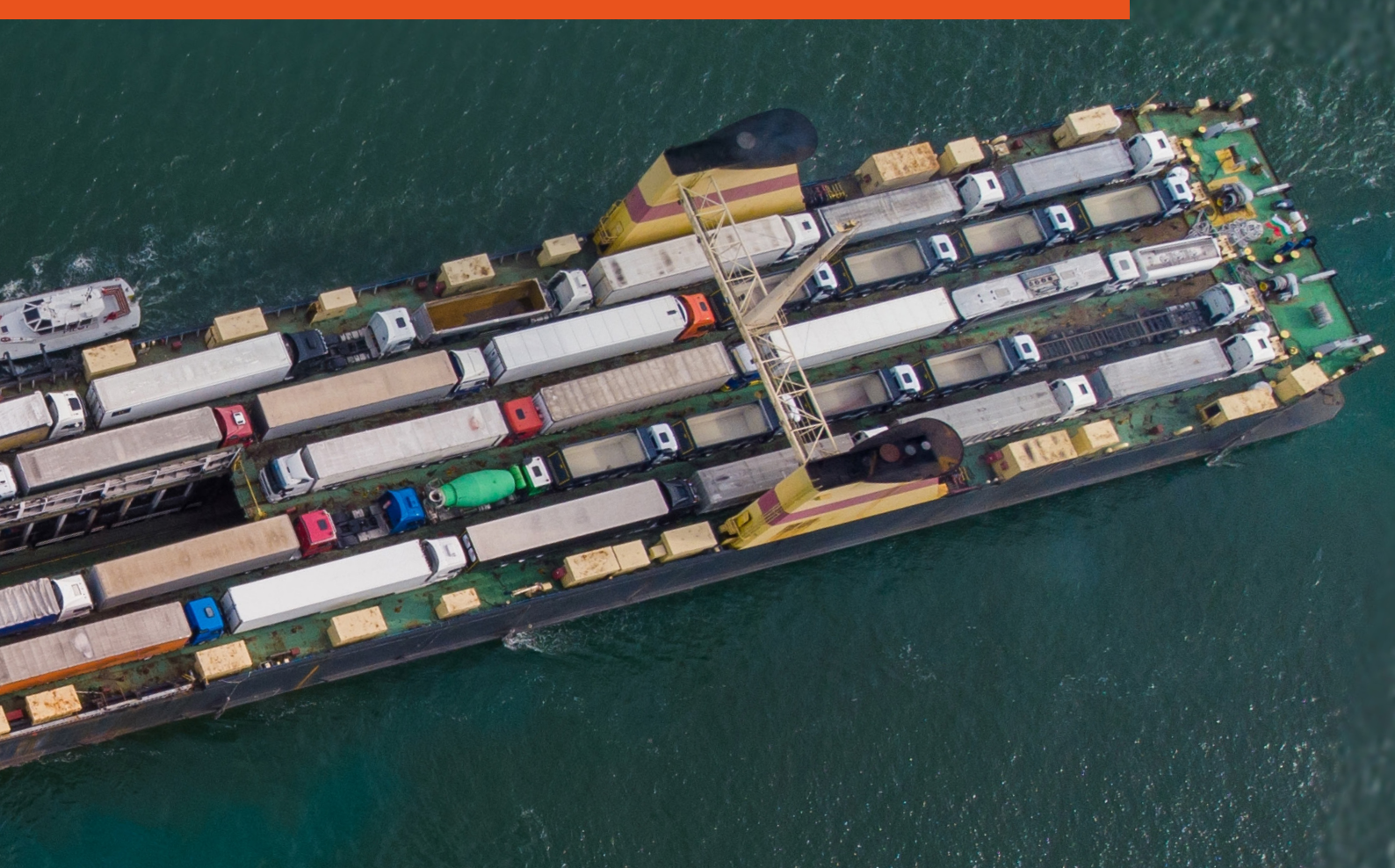




# FIXED WATER MONITORS FOR WEATHER DECKS

Enhancing fire protection for RORO and ROPAX ships



## **New MSC requirement for weather decks: Are you ready?**

Given the rising number of fire incidents on vehicle decks of RORO passenger ships in recent years, plus the safety challenges associated with the carriage of electric vehicles (EVs) and lithium-ion fires, the Maritime Safety Committee (MSC) has decided to tighten fire safety measures. New regulations mandating fixed water monitors on the weather decks of RORO and ROPAX ships will become effective on 1st January 2026.

## **We can help!**

As the leading fire safety provider for the maritime industry, we have in-depth knowledge of current and evolving rules and regulations, and can guide you in understanding what the new requirements will mean for you and how best to comply with them.

# FIXED WATER MONITORS FOR WEATHER DECKS

## What does the MSC. 550 (108) resolution mean for me?

The large, open nature of cargo spaces on RORO and ROPAX vessels means that fires can spread quickly, potentially affecting the entire length of the vessel. Consequently, the International Maritime Organization (IMO) recognised the need for additional fire suppression systems on these decks.

This resulted in amendments to SOLAS Chapter II-2 and the FSS Code, including updates to MSC 1 / Circ. 1430. The MSC.550(108) resolution mandates fixed, water-based fire-extinguishing monitors on weather decks intended for the carriage of vehicles. These must be installed on all new ships and retrofits. Two monitors are required on ships with a breadth of less than 30 metres, and four monitors on wider ships, each monitor with a capacity of 2 litres/min/m<sup>2</sup>.



## We can help you future-proof your vessel

Whether you are looking to install fixed water monitors on new builds or sea-going ships, we can help you future-proof your vessels. Building on the experience we have gained as an OEM, our experts can advise on reliable, integrated solutions tailored to the requirements of your vessel. For added flexibility, our one-stop portfolio of fixed water monitors spans manual, self-oscillating, hydraulic and electric designs. The automated options are particularly ideal for retrofits and space-constrained vessels.



# FIXED WATER MONITORS FOR WEATHER DECKS

Our fixed water monitors come with the following advantages:

- Heavy-duty, corrosion- and fire-resistant design for harsh environments
- Rapid deployment for quick fire response
- Ease of use – from a distance with remote-control models – for fail-safe operation
- Maintenance-friendly design for low operating costs
- Type approval for full regulatory compliance
- Flexible installation and mounting options
- Ease of integration with our XFLOW water mist system for enhanced protection
- End-to-end service and support offering over the entire solution lifecycle, including consultancy, product delivery and service inspections

**All Survitec fixed water monitors are type-approved according to IMO regulations under SOLAS II-2/10.8 &18 and FSS Code Ch14.**

## What kind of fixed water monitor is best for me?

### Fixed water monitor – hydraulic operation

- Extended range and power with minimal pressure drop
- Hydraulic precision for smooth, accurate aiming
- Local or remote operation



### Fixed water monitor – electric operation

- Precise motion control, both horizontal and vertical
- Protected electric motors in sealed enclosures
- Emergency stop function



### Fixed water monitor – self-oscillating

- Automated oscillation over adjustable 30° to 100° arcs
- Manual override for immediate, hands-on firefighting
- No external power required – water pressure is sufficient



### Fixed water monitor – manual operation

- Adjustable arc oscillation angles over full 360° rotation
- Lock mechanism to secure monitor in position
- Adjustable capacity depending on water pressure



## Do you need more guidance?

Our fire safety experts would be delighted to advise on the model and installation best suited to your needs. Contact us today at [info@survitecgroup.com](mailto:info@survitecgroup.com)

## Your trusted safety partner – every step of the way from compliance consulting to lifecycle maintenance

As the Team Trusted to Protect Lives, we believe in a holistic, “bow to stern” approach to fire protection. Our fixed water monitors are part of a wide-ranging portfolio encompassing fire prevention, fire detection and fire suppression systems as well as loose fire equipment to provide you with a total, integrated fire safety management package.

We also bring advanced intelligence to this comprehensive offering through our SMARR-TI graphical monitoring technology – giving you one, integrated safety management solution that allows you to monitor and control all your onboard fire safety systems from one single place.

You can rely on our fire safety specialists for expert support at all stages of your solution lifecycle:

- Design consultancy and advice
- Installation & commissioning
- Training services
- Superior full-lifetime support

**Contact our team today to request a quote or to learn more about our solutions.  
Email us at [info@survitecgroup.com](mailto:info@survitecgroup.com).**



### GET IN TOUCH

Email: [info@survitecgroup.com](mailto:info@survitecgroup.com)  
[www.survitecgroup.com](http://www.survitecgroup.com)

### Copyright Notice

The copyright, trademarks, domain names and other intellectual property rights to all material and information in this presentation belong to Survitec Group Limited. All rights are reserved.

### Disclaimer

This document provides general information about Survitec and its companies, its products and its services, and summarises general capabilities and offerings which we deem to be of relevance to our customers. Whilst Survitec has taken appropriate steps to ensure the accuracy of the information contained in this document, Survitec gives no warranty regarding the accuracy or completeness of such information.

This presentation was prepared to provide information and does not constitute a contract. Survitec reserves the right, without prior notice, to change, delete, supplement or otherwise amend at any time the information, images and offerings contained in this presentation or other documents. Survitec shall not be liable for any loss or damage of whatever nature (whether direct, indirect, consequential or other) that may arise as a result of any third party relying on the information contained in this document (but nothing in this disclaimer excludes liability for death or personal injury arising from negligence or any fraudulent misrepresentation).

For further detailed information, prices, terms and conditions, customers should contact Survitec at [info@survitecgroup.com](mailto:info@survitecgroup.com)

Rv1